



# Schoology 101 Basics

## Log In & Conferences

### Student Reference Guide





You need to sign in to the internet with either Google Chrome or Firefox.



Schoology 101: Lexington Schoo... BigBlueButton - Schoology 1

m0300.rna1.blindsidenetworks.com/html5client/join?sessionToken=I9mbrsnolwbexsmf

Paused

Public Chat

MESSAGES

Public Chat

NOTES

Shared Notes

USERS (2)

Schoology

For help using BigBlueButton watch these (short) [tutorial videos](#).

Schoology 101 Basics

Dina Shouman

Ms. Larsen

Welcome to Schoology 101

Ms. Larsen  
larsen\_s@auhsd.us

Send message to Public Chat

Type here to search

1:24 PM 7/31/2020

**Video showing how to sign into Conferences on the first day of school.**



You need to type in the address for  
auhsd.schoology.com

Google

Search Google or type a URL



Web Store



Add shortcut

Browser tabs: Login to Schoology

Address bar: auhsd.schoology.com/login/ldap?&school=2031048030#/?\_k=yf1guk

Navigation: Apps Gmail YouTube Maps Home | Schoology

### Sign in to Schoology

All fields are required

1045103@student.auhsd.us

Gr2w5xYj

Anaheim Union High School District Anaheim, CA

[Log in](#)

Type Your school assigned password.  
Remember, it is case sensitive so you have  
to type it exactly how it was given to you.

You need to type in your  
complete email address.

This is your course dashboard. Your dashboard will have ALL 7 of your classes.

Course



Schoology 101: Lexington Schoology 101  
Lexington Junior High School

Upcoming Assignments in order of date due.

Overdue

Upcoming [Calendar](#)

THURSDAY, AUGUST 13, 2020

- Title & Author 2:30 pm

FRIDAY, AUGUST 14, 2020

- Schoology Code of Conduct 8:59 pm

TUESDAY, AUGUST 18, 2020

- Character Description & Traits 2:30 pm

WEDNESDAY, AUGUST 19, 2020

- All About Me 3:59 pm

Help Center



Schoolology 101: Lexington Schoolology 101

Lexington Junior High School

**Announcement:**  
This is to remind you that every Tuesday and comment on a Discussion thread teacher to teacher so make sure you

Asynchronous Attendance

Q1 Independent Reading Responses-Asynchronous Attendance

Week 1

Week 2

Test Reading  
Due Monday, August 3, 2020 at 11:59 pm

Upcoming - 15

Thursday, August 13, 2020

Title & Author 2:30 pm

Friday, August 14, 2020

Schoology Code of Conduct 9:59 pm

Tuesday, August 18, 2020

Character Description & Traits 2:30 pm

Wednesday, August 19, 2020

Gen's Game- Pixar Video & Focus Questions 3:59 pm

All About Me 3:59 pm

The Conference tab is what you need to enter your online classroom

Announcements with an active link in blue.

Folders and assignments set-up by your teacher. This may look different in each class.

Assignments in order of their due date for this class.



- Materials
- Mastery
- Attendance
- Members
- Conferences**
- HMH
- McGraw Hill K-12 SSO
- Newsela
- OneNote Class Notebo...

### Conferences

- Active**
- Completed

Title	Start Time	End Time
Schoology 101 Period 1	08/12/2020 at 8:30 AM	In progress

**Click on the live blue link to enter your teachers live instruction.**



MESSAGES < Public Chat

Public Chat

NOTES

Shared Notes

Schoology

For help using BigBlueButton watch these (short) [tutorial videos](#).

USERS (2)

Dir

Ms. Larsen

Schoology 101 Period 1

How would you like to join the audio?

Microphone Listen only

Send message to Public Chat

Be sure to say yes to the mic. The district expectation is that you have your mic on and your webcam on.

...3.rna1.blindsidenetworks.com wants to

Use your microphone

Allow Block



Allow access to your microphone

We need you to allow us to use your media devices in order to join you to the voice conference :)

How would you like to join the audio?

Microphone Listen only

Schoolology 101: Lexington Schoc x BigBlueButton - Schoolology 1 x +

m0503.rna1.blindsidenetworks.com/html5client/join?sessionToken=emt47jcrbco4nste

Apps Gmail YouTube Maps Home | Schoolology

Public Chat

Schoolology

For help using BigBlueButton watch these (short) [tutorial videos](#).

Public Chat

Shared Notes

MSERS (2)

Di (B)

Ms. Larsen

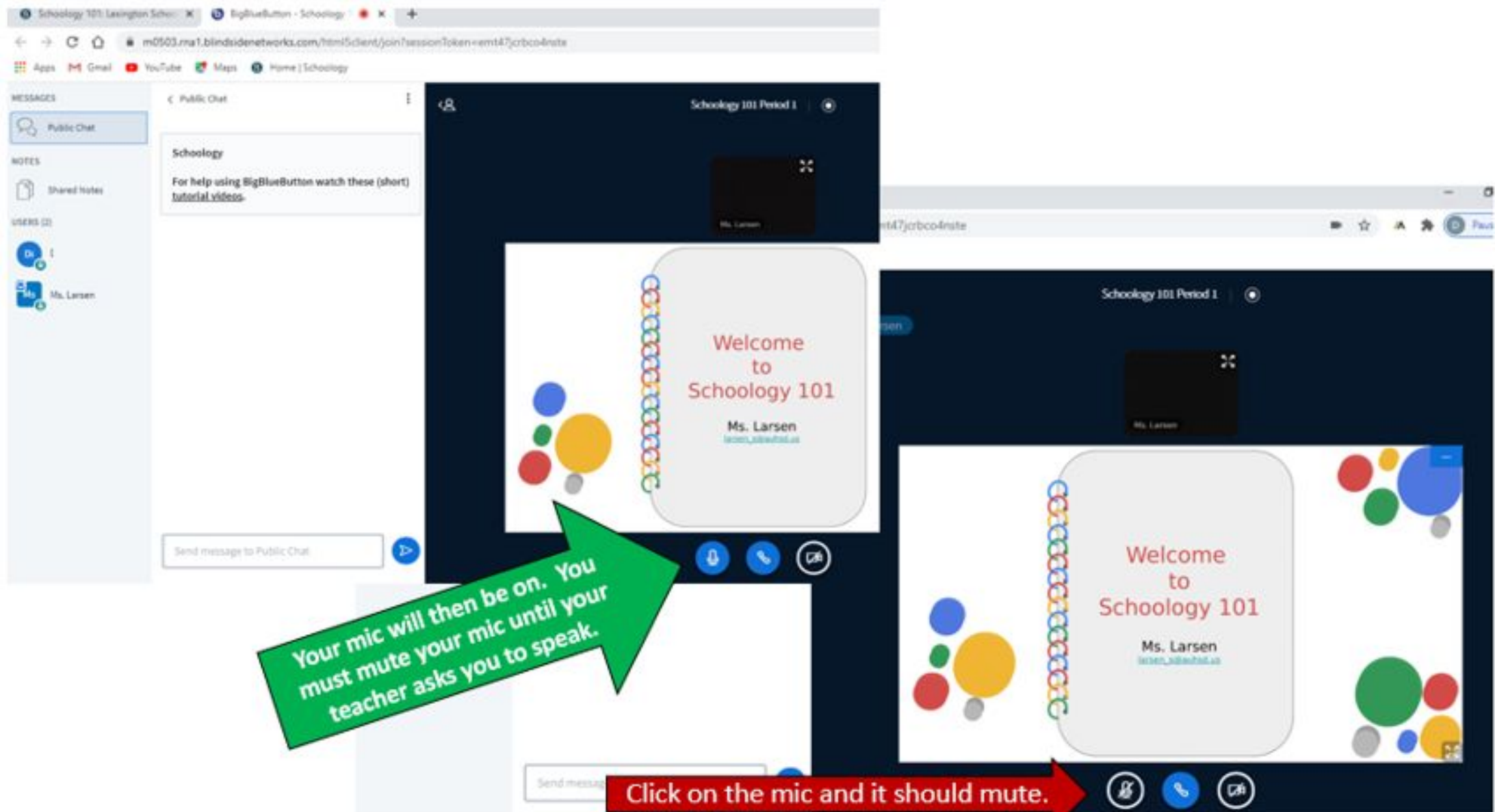
Schoolology 101 Period 1

This is a private echo test. Speak a few words. Did you hear audio?

Click thumbs up to say yes for mic and audio.

Yes No

Send message to Public Chat



...3.rna1.blindsidenetworks.com wants to

- Use your camera

Allow Block

2. Next, click Allow

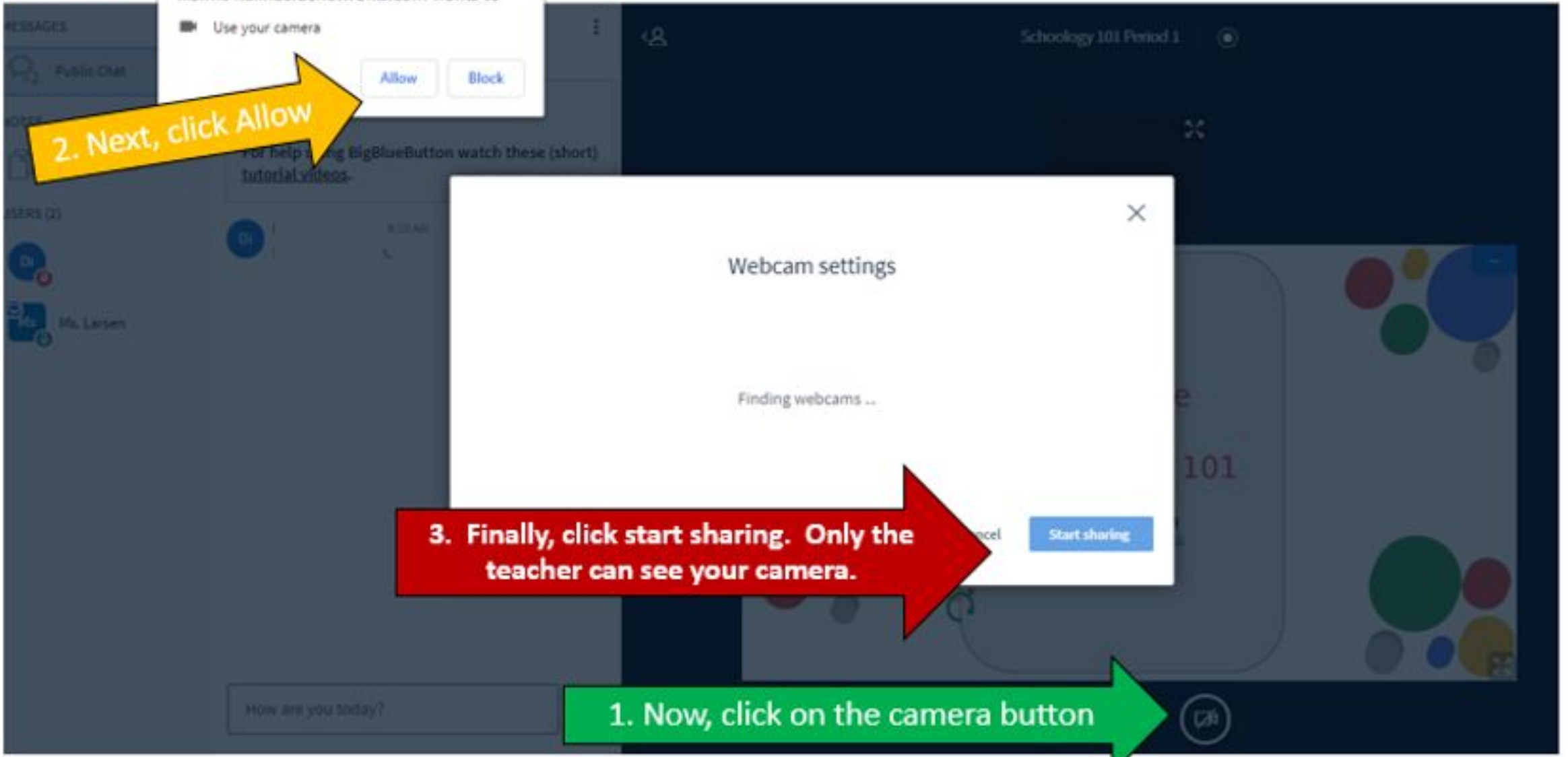
Webcam settings

Finding webcams ...

Cancel Start sharing

3. Finally, click start sharing. Only the teacher can see your camera.

1. Now, click on the camera button



MESSAGES

Public Chat

NOTES

Shared Notes

USERS (2)

Public Chat

Schoolology

For help using BigBlueButton watch these (short) [tutorial videos](#).

Ms. Larsen

How are you today?

Entire class sees what you type.

Public chat box. Type message here.

Schoolology 101 Period 1

Ms. Larsen

Welcome to Schoolology 101

Ms. Larsen  
larsen\_bill@whod.us

Public Chat

Schoology

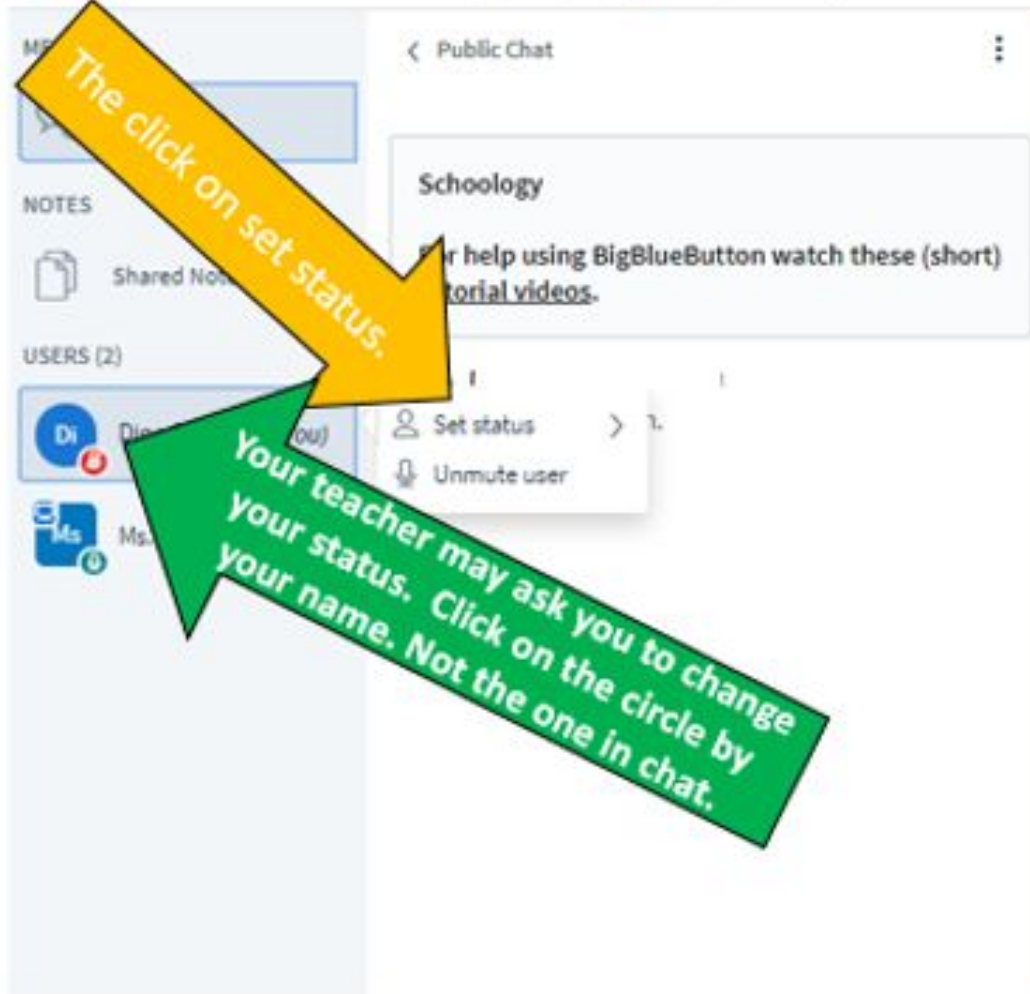
For help using BigBlueButton watch these (short) tutorial videos.

USERS (2)

- Di (you)
- Ms.

Set status

Unmute user



The screenshot shows a chat window with a sidebar on the left containing 'NOTES' and 'USERS (2)'. The 'USERS' list shows two participants: 'Di (you)' and 'Ms.'. A context menu is open over the 'Di (you)' user, showing 'Set status' and 'Unmute user' options. A yellow arrow points to the 'Set status' option with the text 'The click on set status.' A green arrow points to the 'Di (you)' user with the text 'Your teacher may ask you to change your status. Click on the circle by your name. Not the one in chat.'

Schoology 101 Period 1



The screenshot shows a video conference interface with a dark background. At the top, it says 'Schoology 101 Period 1'. Below this, there are two video thumbnails. The one on the right is active and shows a person's name 'Ms. Larsen'.

Welcome to Schoology 101

Ms. Larsen  
larsen\_s@aubsd.us



The slide features a decorative border on the left side consisting of a vertical line of colorful circles and a larger cluster of colorful circles at the bottom left. The text is centered and reads 'Welcome to Schoology 101' in red, followed by 'Ms. Larsen' and her email address 'larsen\_s@aubsd.us' in blue.

Schoolology 101: Lexington Schoo x BigBlueButton - Schoolology x +

m0503.rna1.blindsidenetworks.com/html5client/join?sessionToken=emt47jcrbco4rste

Apps Gmail YouTube Maps Home | Schoolology

**MESSAGES**

- Public Chat

**NOTES**

- Shared Notes

**USERS (2)**

- Di
- Ms. Larsen

Public Chat

Schoolology

For help using BigBlueButton watch these (short) [tutorial videos](#).

Back

- Away
- Raise
- Undecided
- Confused
- Sad
- Happy
- Applaud
- Thumbs up
- Thumbs down

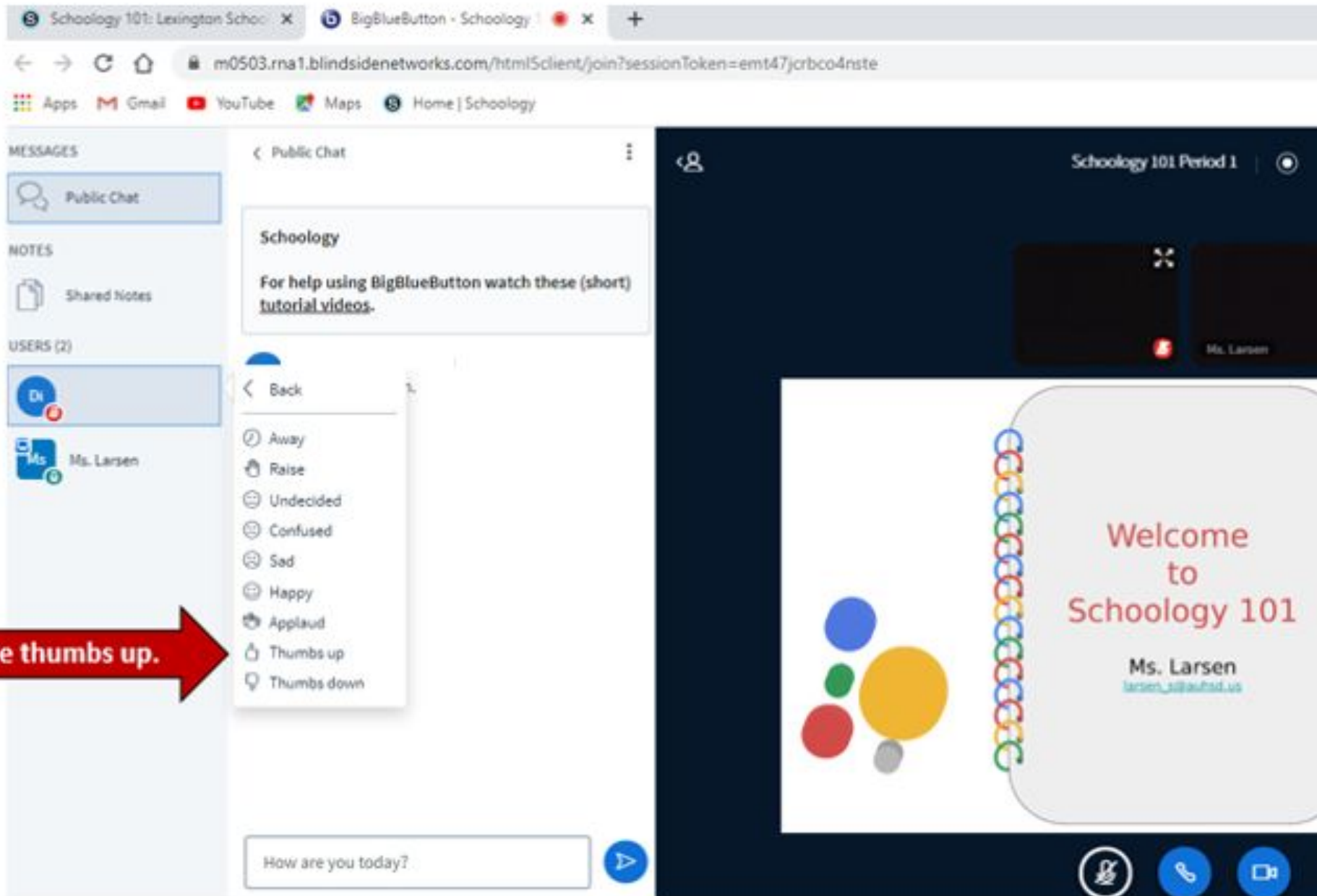
How are you today?

Schoolology 101 Period 1

Ms. Larsen

Welcome to Schoolology 101

Ms. Larsen  
larsen\_s@lafsd.us



Choose thumbs up.



MESSAGES

Public Chat

NOTES

Shared Notes

USERS (2)

Ms. Larsen

Public Chat

Schoology

BigBlueButton watch these (short)

8:10 AM

Hello Ms. Larsen.

Your teacher sees a thumbs up.

Schoology 101 Period 1

Ms. Larsen

Welcome to Schoology 101

Ms. Larsen  
larsen\_s@ashsd.us

If you have any other question ask  
you teacher in class.

